

Te Waea AGM 2021

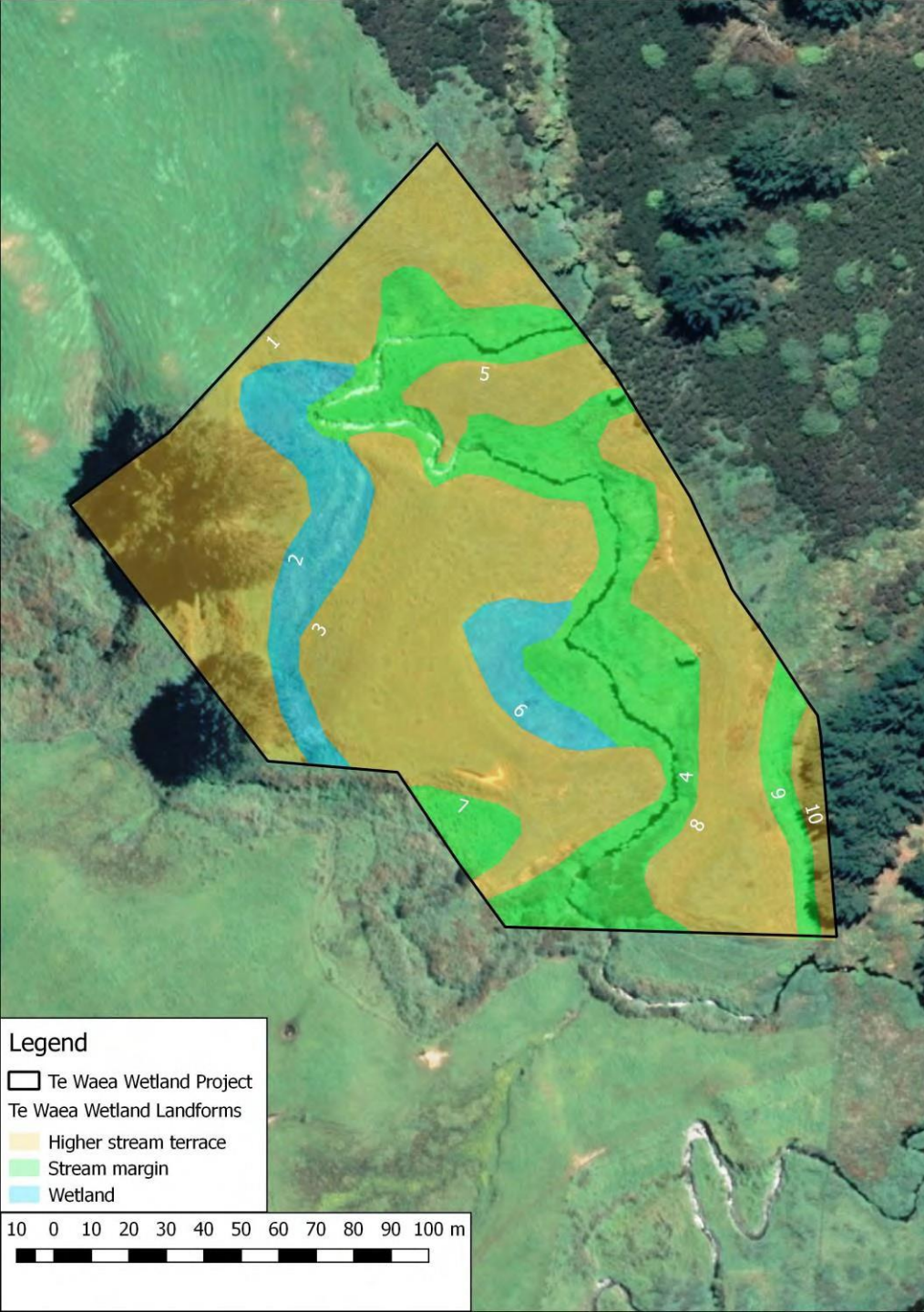
Te Paiaka Lands Trust - Lessee

Te Waea farm

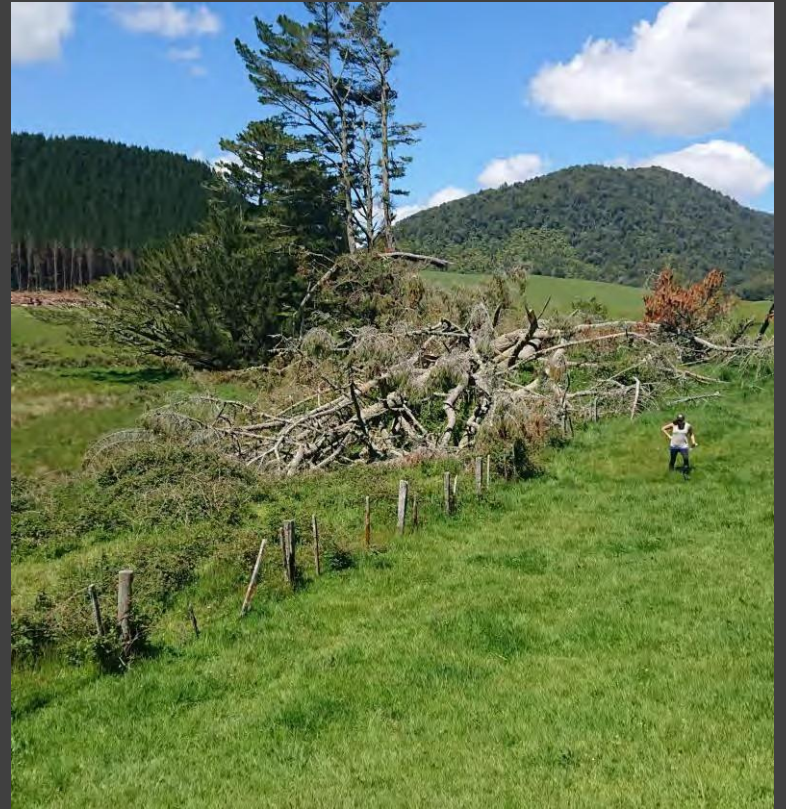




Te Waea Riparian



Te Waea Wetland



November 2019



May 2021



Te Waea Wetland

- 1.82 hectares
- Sprayed out blackberry and weeds
- Replaced old fence and gate
- Planting 9,000 trees and plants – 12 species including mānuka, parata (lemonwood), karamu, manatu (ribbonwood), totara, kahikatea, harakeke, ti kouka
- Future maintenance - release spraying to protect young plants, top up planting with slower growers, e.g. totara.

Te Waea farm

